

GLYTONE

PROFESSIONAL by ENERPEEL®

Brightening

Hand

For Mild-Moderate Photo-aging of Hands



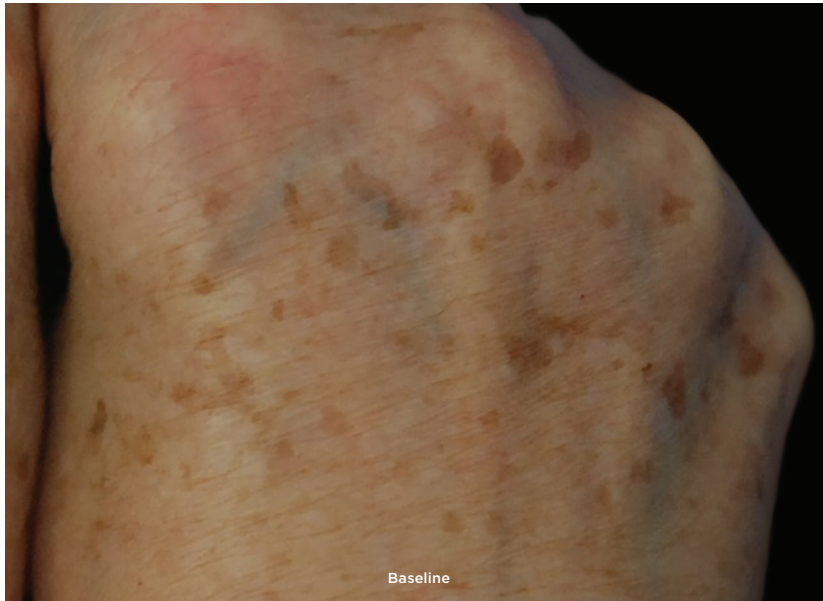
Rejuvenating

TCA LP

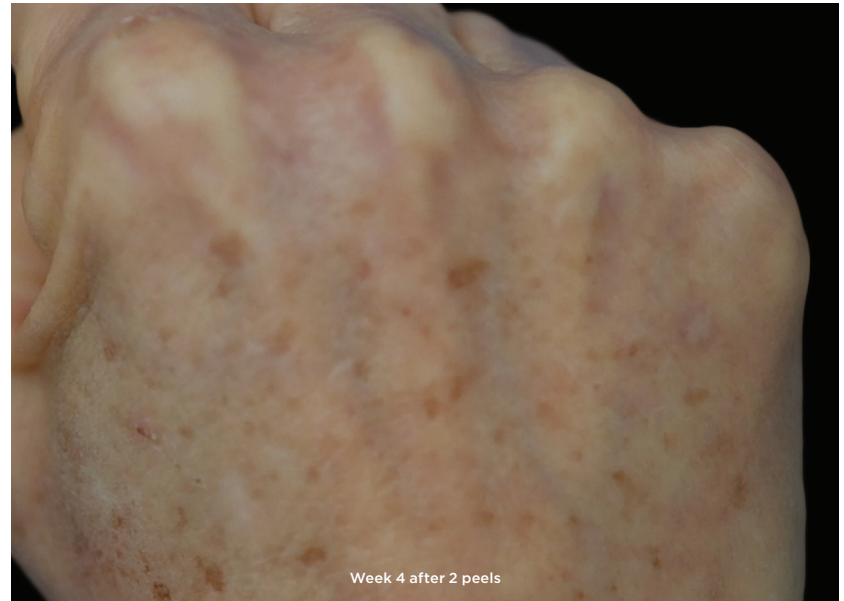
For Chrono- & Photo-aging /
Moderate Hyperpigmented Skin



Reveal brighter and smoother skin for younger looking hands



Baseline



Week 4 after 2 peels

Results may vary. Photographs courtesy of Dr. Ana Beatris Rossi, Toulouse University Hospital, France.

IN-OFFICE PEEL PER SERIES

- 2 layers
- 2 x GLYTONE Hands Peel and
2 x GLYTONE TCA LP Peel on lentigo
- 30 days apart

TAKE-HOME TREATMENT

- GLYTONE Enhance Brightening Complex
- Tretinoin Cream .05%
- Avène Mineral High Protection Tinted Compact SPF 50